



1111/36 Cowper Street Parramatta NSW

2 2 2

This high level, stylish apartment offers panoramic city skyline views from a quiet, urban oasis. Set in the thriving heart of Parramatta CBD, this light-filled apartment is a prime example of executive city living just walking distance to all major amenities including Westfield Parramatta and train stations.

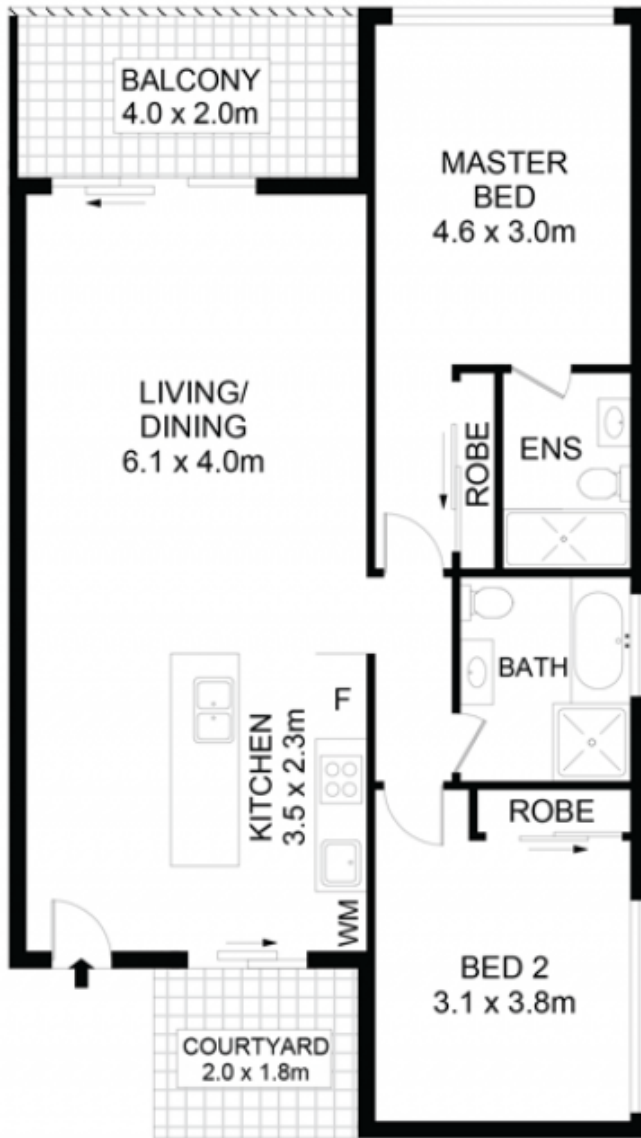
Type : Apartment

View : <https://www.sevenrealestate.com.au/8412018>

Featuring:

- Light-filled living/dining area immaculately presented in contemporary white
- Sleek designer kitchen with gas cooking, stone bench tops and stainless steel appliances
- Living/dining area opens to covered balcony with panoramic city skyline views

[For full version visit the website](#)



LEVEL 11

1111/36 Cowper St Parramatta



DISCLAIMER

DIMENSIONS ARE APPROXIMATE AND SHOULD ONLY BE USED AS A GUIDE
 THEY ARE NOT TO SCALE AND NO LIABILITY WILL BE ACCEPTED

SEVEN
 Real Estate