



**212/1 Scotsman Street Forest Lodge NSW**

1 1

The nice apartment is located in the Harold Park Complex, offering a convenient lifestyle. It is situated just a 6-minute walk away from the Jubilee Park Light Rail station, and in close proximity to parklands such as Jubilee Park, Bicentennial Park, Glebe Foreshore Parks, Harold Park, and Glebe Point.

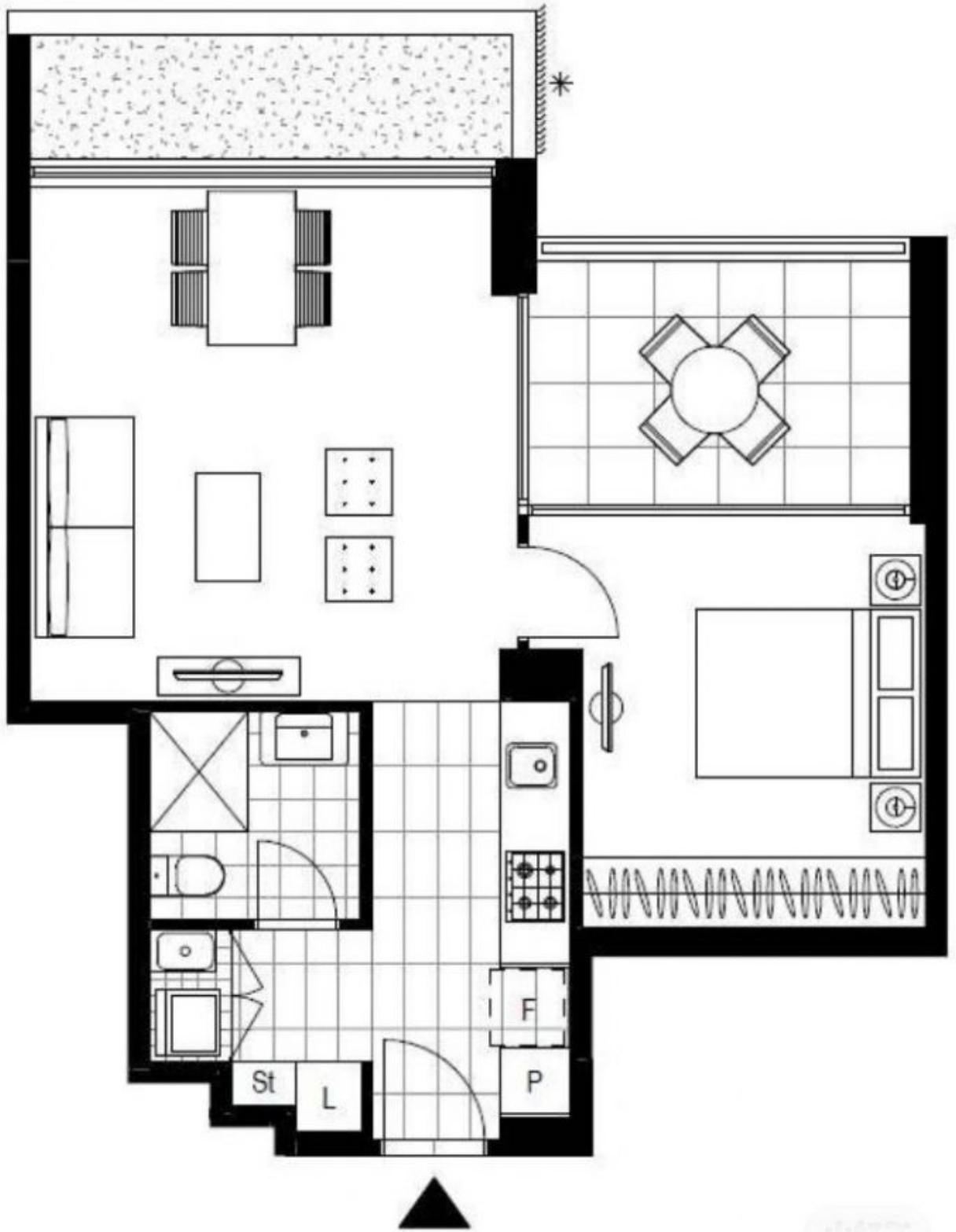
**Type** : Apartment

**View** : <https://www.sevenrealestate.com.au/8412014>

**Features:**

- Bedroom with plenty of cupboard storage
- Super-fast NBN internet access.
- Open plan living with a large balcony.
- Internal laundry with dryer
- Designer Galley kitchen with Caesar Stone bench tops and Miele Appliances (including dishwasher)

[For full version visit the website](#)



LEVEL 2 我的小红书号: LisaRealty