



350/84-92 Epsom Road Zetland NSW

2 🛏 2 🚿 1 🚗

Seven Real Estate is delighted to present this gorgeous apartment in the highly popular Zetland area, just 4km from the Sydney CBD. Overlooking manicured gardens and local parks, this property has all the best features to make it a must see for home-seekers. The leafy suburb of Zetland is home to a young, working professional demographic, with ample access to convenient local amenities.

Type : Apartment
View : <https://www.sevenrealestate.com.au/8411721>

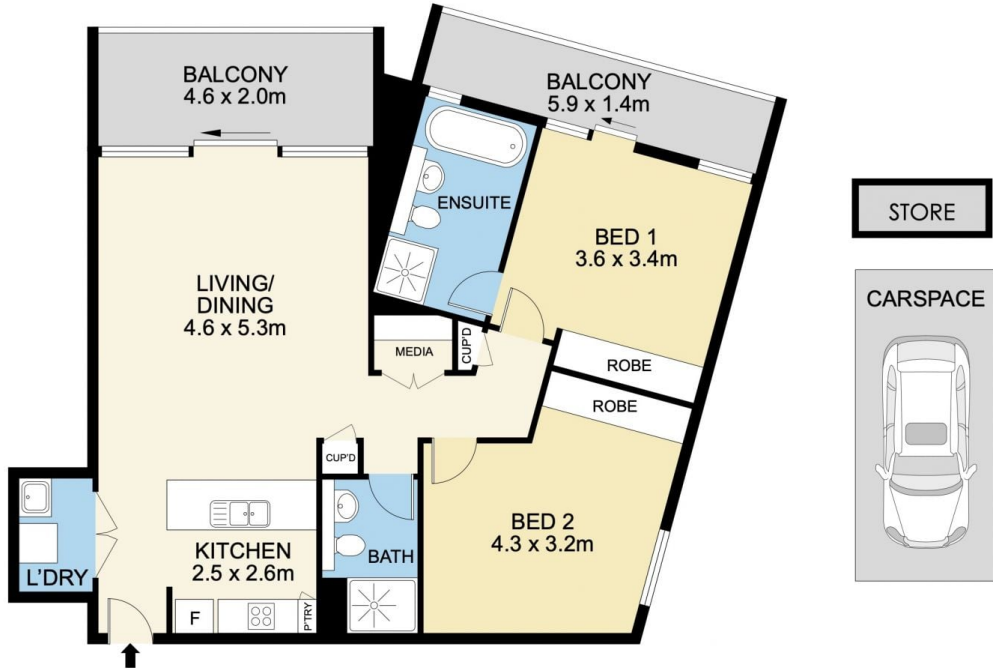
Features:

- ? - Wide living area with northerly aspect and low-maintenance flooring
- ? - Sunny private balcony, ideal for apartment garden or alfresco entertaining
- ? - Modern kitchen with waterfall benchtop and s/steel



Dennis Yinyi WANG
02 8628 7363

[For full version visit the website](#)



350/92 Epsom Road, Zetland



DISCLAIMER
 DIMENSIONS ARE APPROXIMATE AND SHOULD ONLY BE USED AS A GUIDE
 THEY ARE NOT TO SCALE AND NO LIABILITY WILL BE ACCEPTED

SEVEN
 Real Estate