



**12 Freesia Place Glenmore Park NSW**

4 2 4

Seven Real Estate are proud to present this gorgeous family home. Located on a large block in an established family neighbourhood, this property is a true gem. Strolling distance to picturesque lakeside, local parks and shops, this is an ideal choice for families of any size. Perfect for families, working professionals and anyone looking to escape the hustle and bustle.

**Features:**

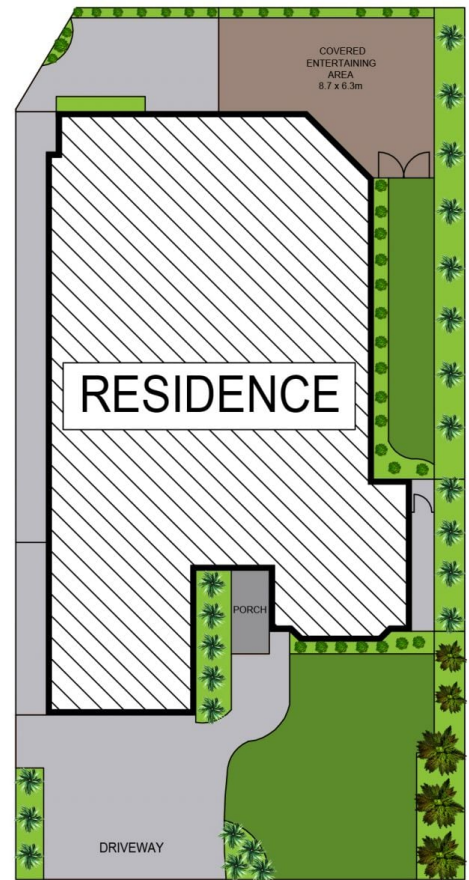
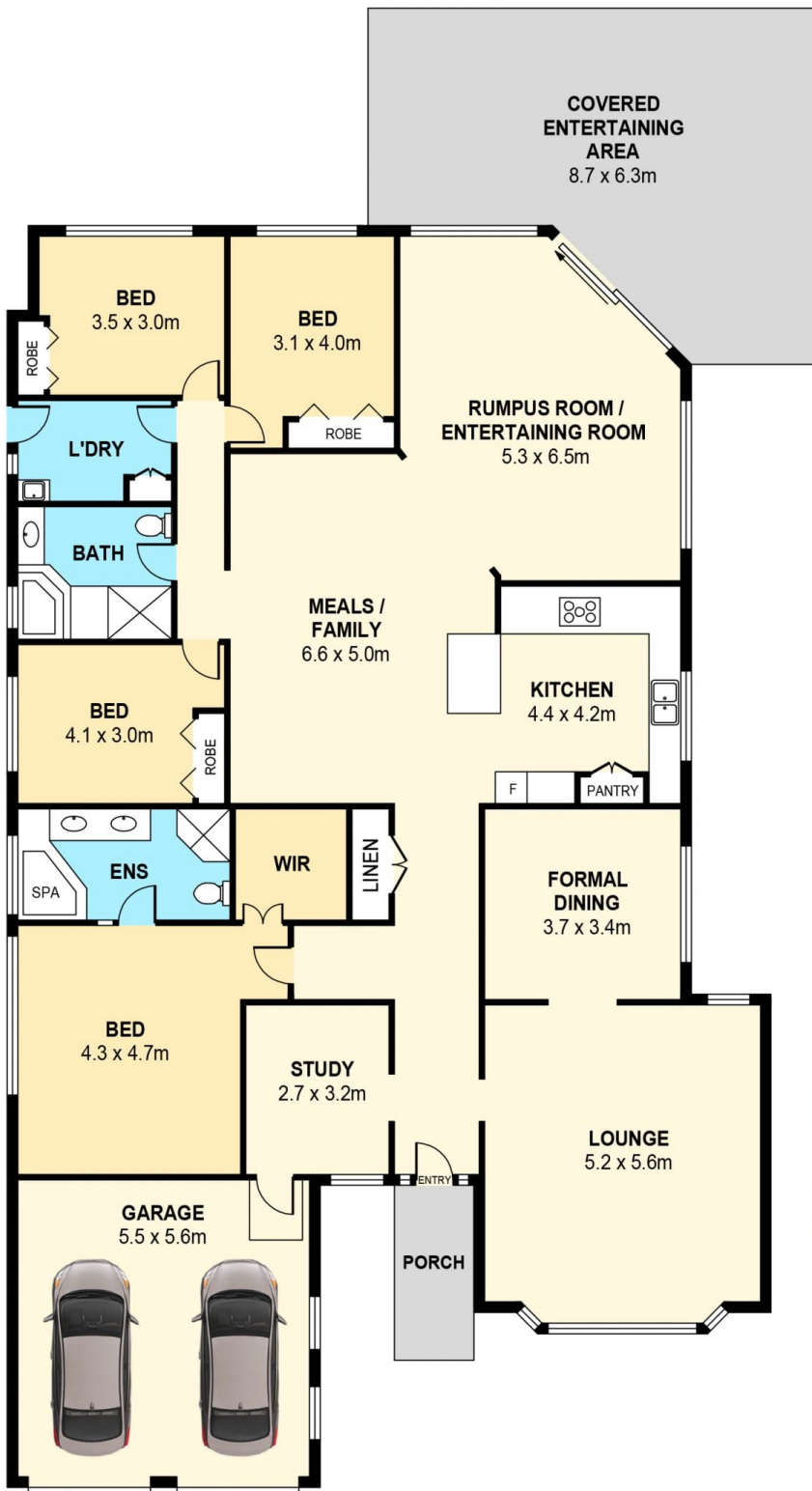
- Classic, single level brick and tile facade on standout 573sqm block
- Large, formal living and dining room, adjacent to entry hall
- Covered entertaining area nestled among established privacy screening

[For full version visit the website](https://www.sevenrealestate.com.au/84115)

**Type** : House  
**Land Size** : 574 sqm  
**View** : <https://www.sevenrealestate.com.au/84115>  
30



**Dennis Yinyi WANG**  
02 8628 7363



**SITE PLAN (NOT TO SCALE)**



# 12 Freesia Place, Glenmore Park

**DISCLAIMER**

DIMENSIONS ARE APPROXIMATE AND SHOULD ONLY BE USED AS A GUIDE  
 THEY ARE NOT TO SCALE AND NO LIABILITY WILL BE ACCEPTED