



406/1 Alma Road Macquarie Park NSW

1 1 1

This over-sized one-bedroom apartment will impress with quality modern appointments and light-filled interiors that create a fresh contemporary feel throughout. It is just steps to Macquarie University to suit the conscientious student, across the road from a major shopping centre, and healthcare professionals note that it's also close to Macquarie and Ryde Hospitals.

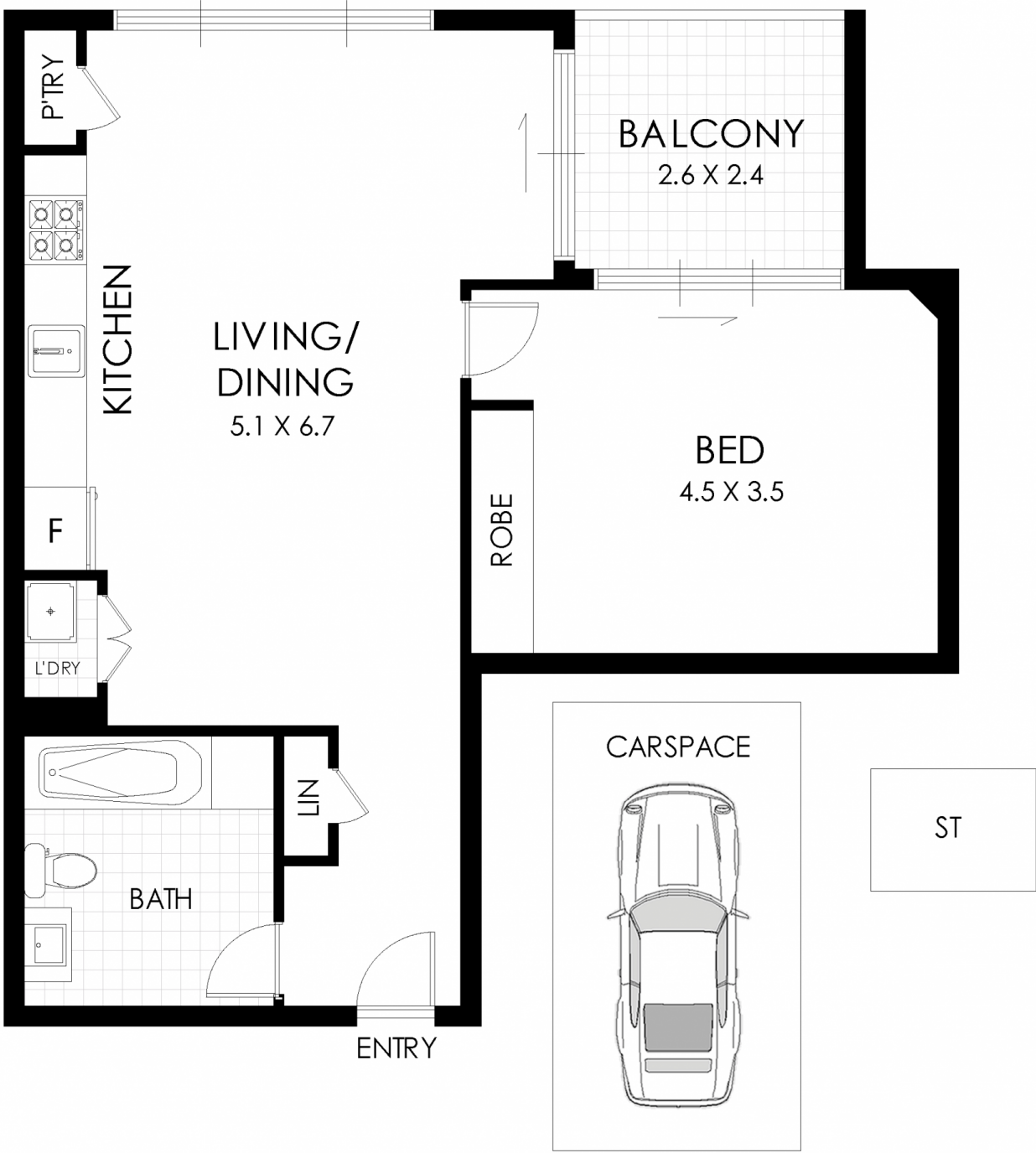
- Spacious open-plan living/dining area features stylish timber-look floor tiles
- Living/dining area and master bedroom both open to a generous balcony
- Covered balcony showcases bright leafy views with plenty of space for entertaining

[For full version visit the website](https://www.sevenrealestate.com.au)

Type : Apartment
Building Size : 60 sqm
Land Size : 76 sqm
View : <https://www.sevenrealestate.com.au/8410365>



Michael HU
02 8628 7363



FLOOR PLAN



406/1 Alma Road, Macquarie Park

WARNING: DISCLAIMER This information is not to be relied upon. It is strictly used for marketing and illustration purposes only. All measurements are approximate. Not to scale. No liability accepted. You must rely on your own inquiries and seek advice from your solicitor. Floor plan by cnkplan@cnkplan.com.au / www.cnkplan.com.au