



14/7-9 The Crescent Berala NSW

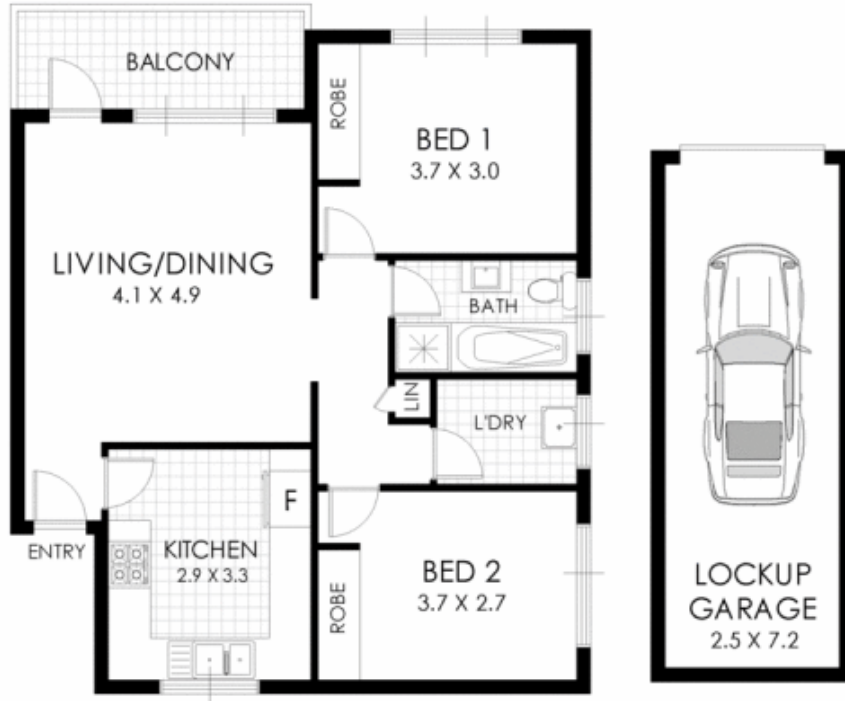
2 1 2

This quality top-floor unit offers bright contemporary living with polished timber floors throughout and split-system air conditioning to the living/dining area. It is set in a full brick complex, ideally located five minutes walk to the train station, Woolworths and a range of restaurants.

- Living/dining area with air conditioning opens to covered balcony
- Wrap-around kitchen with freestanding stainless steel electric oven
- Well-presented main bathroom with separate bath and shower
- Mirrored built-in robes to both bright bedrooms
- Well-equipped internal laundry, plus built-in linen

[For full version visit the website](#)

Type : Apartment
Building Size : 67 sqm
View : <https://www.sevenrealestate.com.au/8410350>



FLOOR PLAN



 2  1  1 14/7 The Crescent, Berala

WARNING: DISCLAIMER This information is not to be relied upon. It is strictly used for marketing and illustration purposes only. All measurements are approximate. Not to scale. No liability accepted. You must rely on your own inquiries and seek advice from your solicitor. Floor plan by cnkplan@cnkplan.com.au / www.cnkplan.com.au