



6 Guilfoyle Street Berala NSW

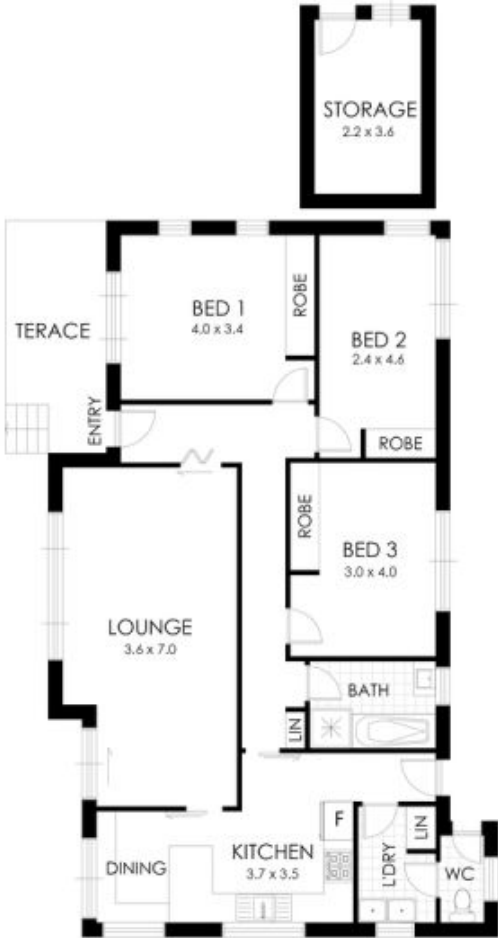
3 1 2

This immaculately presented deceased estate must be sold and offers red-hot value for the first-home buyer or enthusiastic renovator. It is conveniently located three minutes walk to Berala Public School and 500 metres to Woolworths and Berala train station.

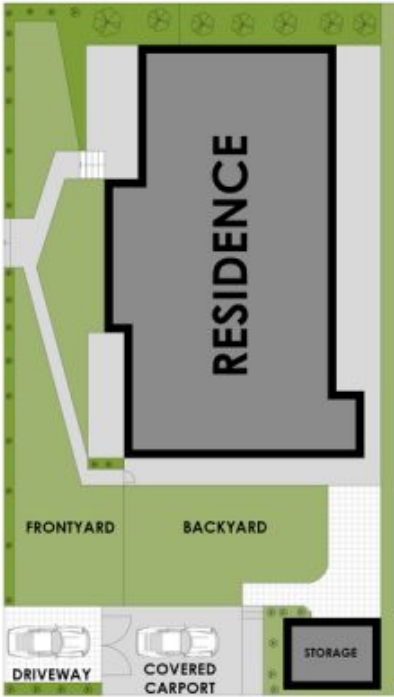
Type : House
Land Size : 367 sqm
View : <https://www.sevenrealestate.com.au/8410322>

- Open-plan living/dining area captures abundant natural light through large feature windows
- Original eat-in kitchen with freestanding electric stove and built-in meals space
- Well-presented retro main bathroom with separate shower and bath
- Three generous bedrooms, all with large built-in robes
- Well-equipped internal laundry with separate toilet and

[For full version visit the website](#)



FLOOR PLAN



SITE PLAN

3 1 2

6 Guilfoyle Street, Berala



Disclaimer: Floor Plan measurements are approximate and are for illustrative purposes only. While we do not doubt the floor plans accuracy, we make no guarantee, warranty or representation as to the accuracy and completeness of the floor plan. You or your advisors should conduct a careful, independent investigation of the property to determine to your satisfaction as to the suitability of the property for your space requirements.