



**5/9-11 Samuel Street Lidcombe NSW**

3 2 1

\*\*\* Inspection cancelled

Enjoy spacious modern living with a peaceful, leafy outlook in this immaculately presented three-bedroom, two-bathroom apartment, conveniently set in a popular central location walking distance to schools, shops and Lidcombe train station.

Open-plan living/dining room with bright feature wall, built-in storage and polished timber floor

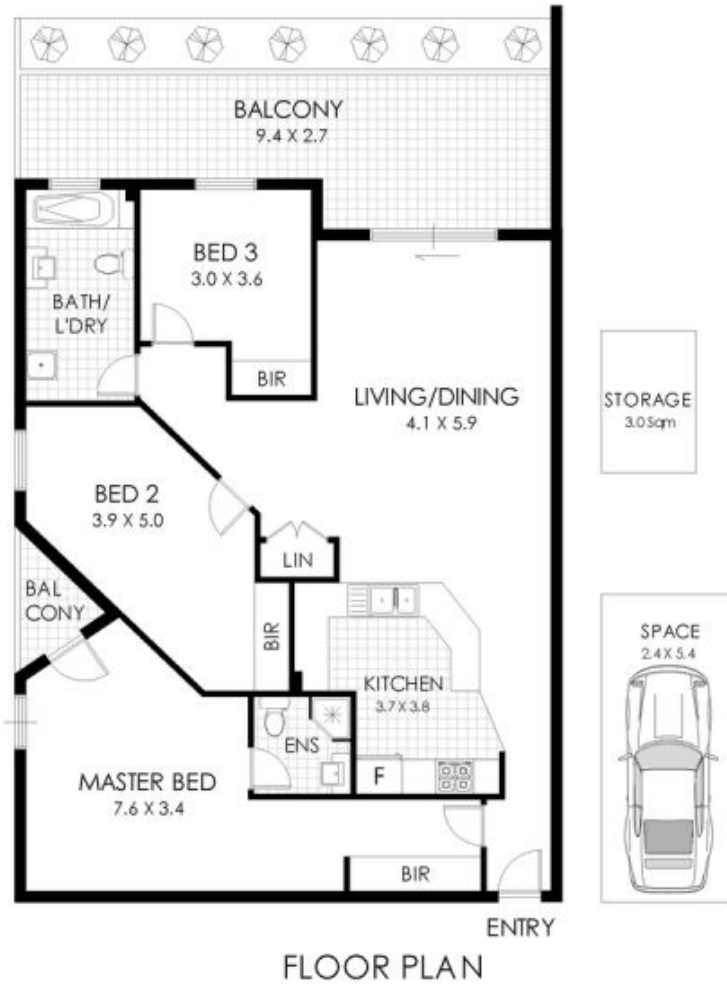
Living/dining opens to private entertainers balcony with established gardens and a peaceful outlook

Large chefs kitchen features wrap-around breakfast bar, gas cooking and stainless steel appliances

[For full version visit the website](#)

**Type** : Apartment

**View** : <https://www.sevenrealestate.com.au/8410307>



FLOOR PLAN



3 2 1 5/9 Samuel Street, Lidcombe

Disclaimer: Floor Plan measurements are approximate and are for illustrative purposes only. While we do not doubt the floor plans accuracy, we make no guarantee, warranty or representation as to the accuracy and completeness of the floor plan. You or your advisors should conduct a careful, independent investigation of the property to determine to your satisfaction as to the suitability of the property for your space requirements.