



**5/159 Wellington Road Sefton NSW**

2 1 1

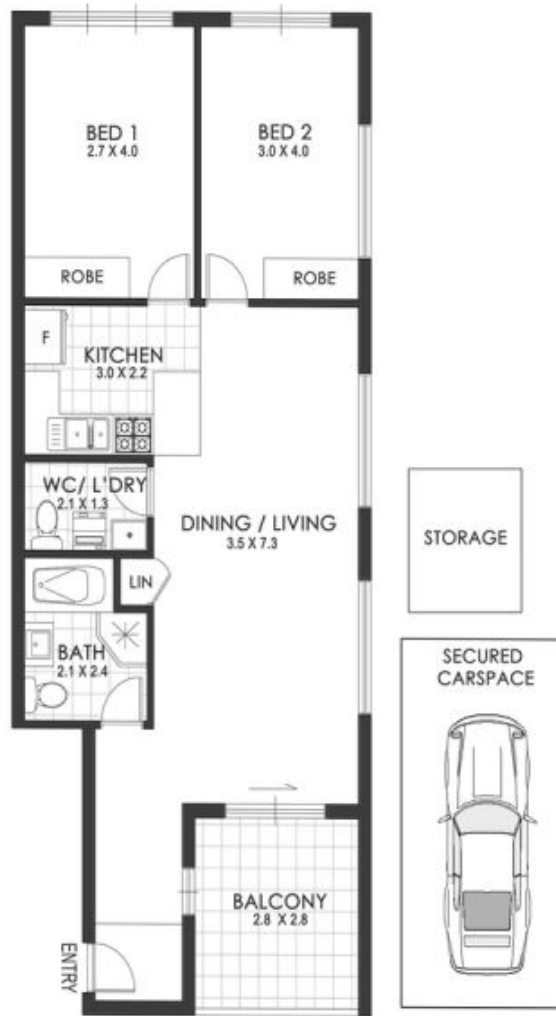
This modern two-bedroom full brick apartment is immaculately presented and offers a low-maintenance executive lifestyle, conveniently located easy walking distance to Sefton train station, shops and a major supermarket, close to schools, and just 20 minutes to Parramatta CBD.

**Type** : Apartment  
**Land Size** : 93 sqm  
**View** : <https://www.sevenrealestate.com.au/8410306>

Enter into a short hallway that opens into the light-filled living/dining area that is carpeted and opens to a sunny semi-enclosed balcony ideal for pot plants or a herb garden.

The stylish modern kitchen adjoins the living/dining area and features sleek black stone bench tops, gas cooking,

[For full version visit the website](#)



FLOOR PLAN

🛏️ 2 🚿 2 🚗 1 5/159 Wellington Road, Sefton



*Disclaimer:* Floor Plan measurements are approximate and are for illustrative purposes only. While we do not doubt the floor plans accuracy, we make no guarantee, warranty or representation as to the accuracy and completeness of the floor plan. You or your advisors should conduct a careful, independent investigation of the property to determine to your satisfaction as to the suitability of the property for your space requirements.