



13/485 Liverpool Road Strathfield NSW

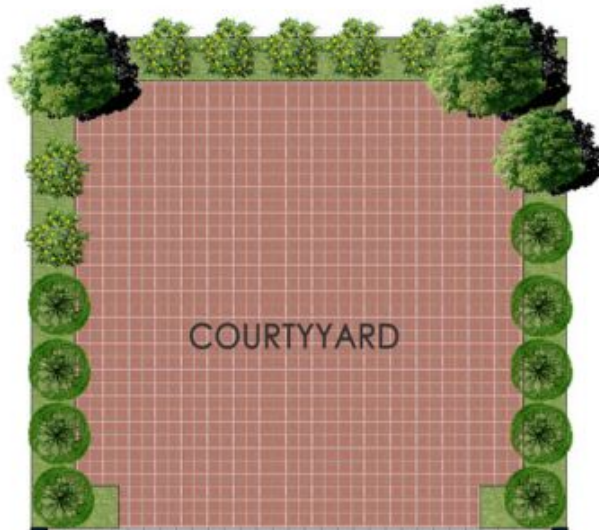
3 1 4

Priced to attract and available to enjoy now, this spacious townhouse is in a small complex in the back away from Liverpool Rd, comes complete with a great outdoor entertainment area and is centrally located for superb access to shops, premier schools and city transport.

Type : Townhouse
Land Size : 215 sqm
View : <https://www.sevenrealestate.com.au/8410280>

This very well presented, double brick, 3 bedroom townhouse with a northerly aspect offering more than most. Upstairs you'll find 3 bedrooms (all with built-ins), a modern bathroom, on the lower level discover a spacious kitchen and light filled lounge room, 2nd toilet, internal laundry and a private paved courtyard great for entertaining! Also with a lock up garage and car space as well as being a short walk to shops and transport. This property is value packed!

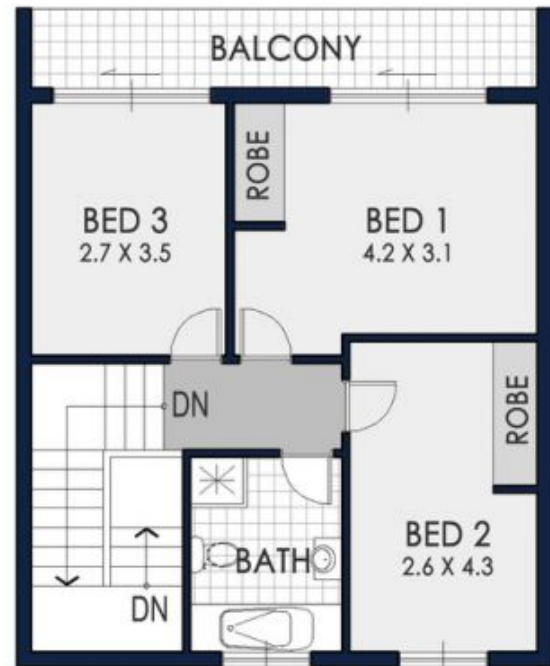
[For full version visit the website](#)



COURTYARD



GROUND FLOOR



UPPER FLOOR



APPROX. AREA SIZE	
Internal area	106.4 sqm
Carspace	16.5 sqm
External	92.5 sqm
Total	215.4 sqm

SEVEN
Real Estate

13/485-491 Liverpool Road, Strathfield

Disclaimer: Whilst all care has been taken to ensure the accuracy in the preparation of the particulars herein, no warranty can be given, and interested parties must rely on their own enquires.